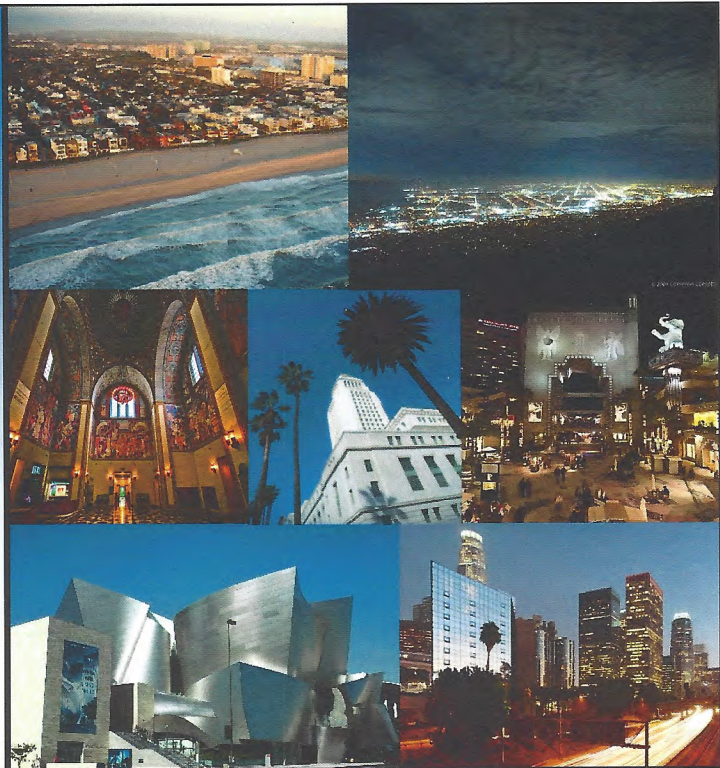




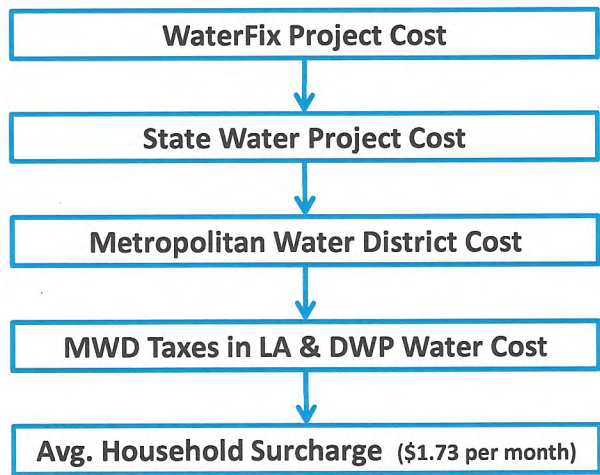
California WaterFix Costs to City Ratepayers

OPA/Ratepayer Advocate
City of Los Angeles
opa@LAcity.org
tel. 213-482-6814

August 29, 2017



Cost Allocation of WaterFix to Los Angeles Single Family Resident Households



CITY OF LOS ANGELES 1

Los Angeles Household Monthly Costs of WaterFix

Description (\$ per month)	Best Case	Probable Average	Worst Case
DWP Water Charge	\$0.09	\$0.73	\$3.05
MWD Property Tax Levy	\$0.78	\$1.00	\$1.26
Total Monthly Surcharge	\$0.87	\$1.73	\$4.31
<i>Standard Deviation (+/-)</i>		<i>\$0.53</i>	

The charges are in 2017 dollars. The MWD tax is for a household with median assessed value. DWP charge is for a median monthly water use of 10 HCF billing units. Current median single family residence bill is about \$60 per month.



WaterFix Costs to City Ratepayers

- ❑ Wide Range of Assumptions for WaterFix Best to Worst Cases
 - 600 randomized modeling runs
 - WaterFix project costs: \$18 to \$26 billion
 - Future Delta water exports: 3.8 to 5.3 million acre-feet per year
 - Baseline SWP/CVP 55/45, scenarios for lower CVP take and price
 - LA dependence on MWD water: 12% to 61% of DWP supply portfolio
- ❑ Issues not Included in Report
 - Total costs of water service (only the direct WaterFix costs are included)
 - Alternatives to the WaterFix project
 - Cost – benefit analysis of the project (or reliability of deliveries, water quality)
- ❑ Conclusion: *The WaterFix surcharges are affordable to single family households in the City of Los Angeles*

