

Venice Blvd.

Safety and Mobility Project



LADOT



Metro

MIKE BONIN

Getting Things Done for Our Neighborhoods
Councilmember, 11th District

Paul Koretz

COUNCILMEMBER • 5TH DISTRICT • CITY OF LOS ANGELES



Project Update & Briefing

November 22, 2022

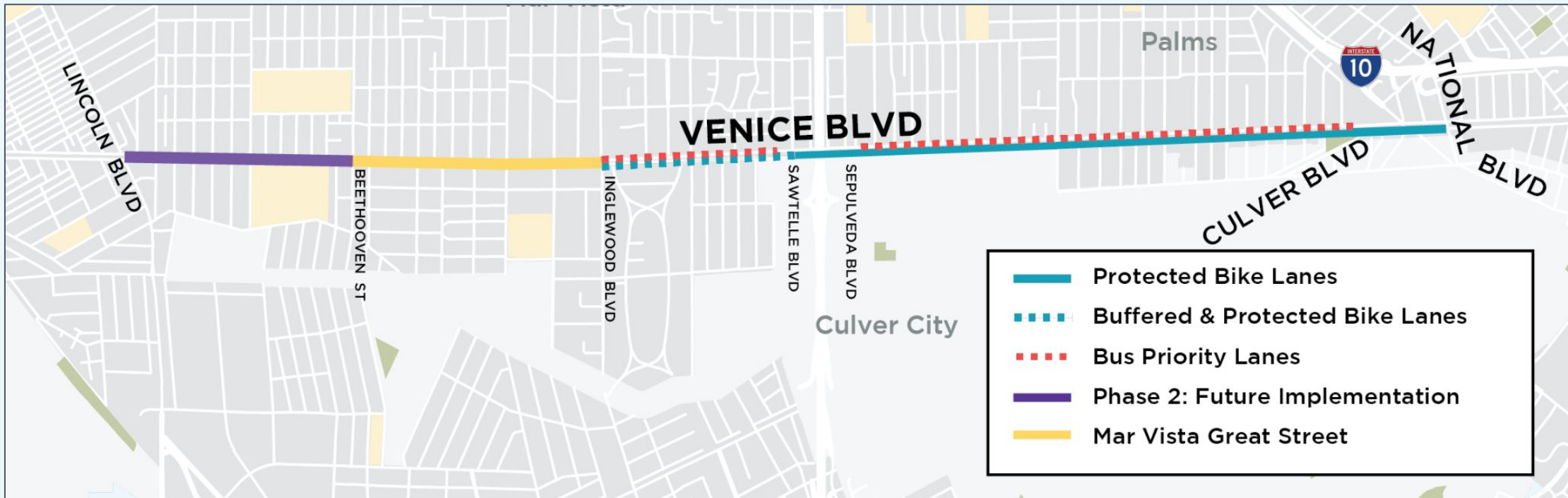


Venice Blvd.

Safety and Mobility Project

Project Overview

- Current Phase for December-March Installation: Venice Boulevard from Inglewood to National



Final Design Components

LADOT and Metro have incorporated the following solutions to address community concerns:

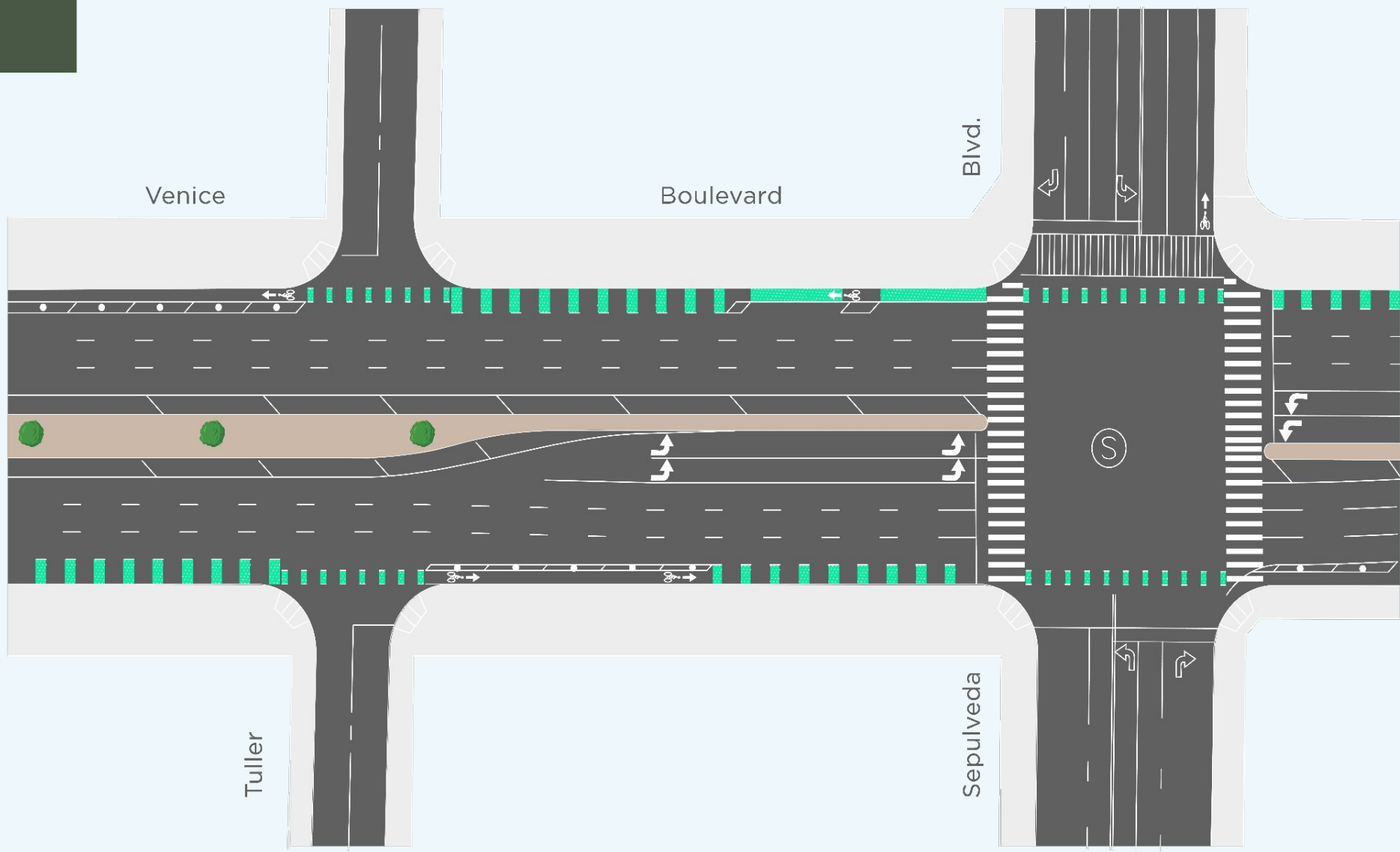
- Implementation of protected left turn signal at Venice Blvd & Hughes Ave
- Maintaining three general travel lanes approaching and under I-405, between Sepulveda- Sawtelle. The bus priority lane will be implemented in both directions between Sepulveda- Culver Blvd and eastbound between Inglewood- Sawtelle.
- Parking protected bike lanes for majority of the corridor, with a buffered bike lane for select segments between Inglewood to Sepulveda.
- Double left-turn pockets at the busiest intersections, Sawtelle and Sepulveda.

Venice Blvd.

Safety and Mobility Project

Design Details- Example Intersection

- Venice Blvd at Sepulveda Blvd:
 - Protected bike lanes
 - New continental crosswalks
 - High-visibility pavement markings (cat tracks and green paint) through intersections and at conflict zones
 - Bus lane transitions to general travel lane approaching Sepulveda and Sawtelle (indicated with red paint and signage)
 - Potential to add second left turn pocket for double left-turns in each direction

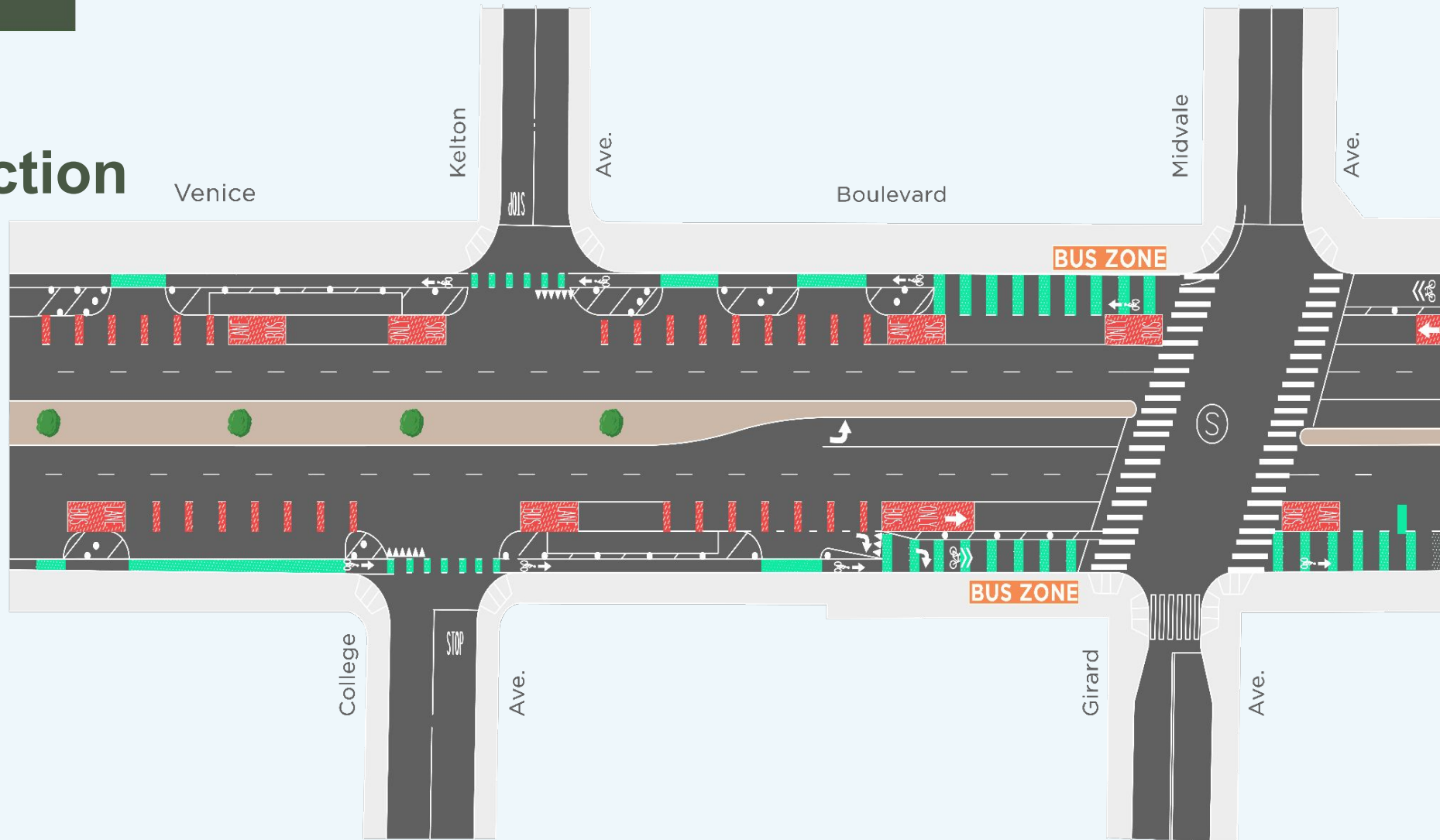


Venice Blvd.

Safety and Mobility Project

Design Details- Example Intersection

- Venice Blvd at Girard Ave
 - Protected bike lanes
 - New continental crosswalks
 - Mixing zones for bicycles, buses, and right-turning vehicles
 - High visibility paint treatment in mixing zones
 - Protected intersection design and “yield” markings for vehicles turning across the bike lane
 - Parking is maintained outside the bike lane



Venice Blvd.

Safety and Mobility Project

Bus Priority Lane

- Bus Priority lane from Inglewood Blvd to Culver Blvd
- Bus Priority lane transitions to general vehicle travel lane for approx. 4 blocks between Sepulveda Blvd and Sawtelle Blvd (under the I-405)
 - Allows all vehicles to use three lanes for a ~4 block segment
 - Alleviates potential congestion at the project's busiest intersections

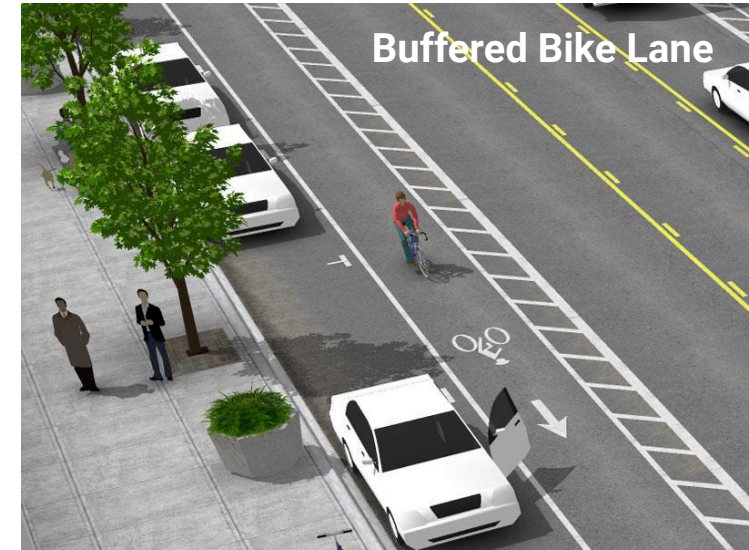


Venice Blvd.

Safety and Mobility Project

Bicycle Lane Design

- Parking protected bike lanes in both directions from Inglewood Blvd to National Blvd
- Buffered bike lanes in select segments between Inglewood Blvd- Sepulveda Blvd (Mar Vista) where street parking demand is high and there are frequent driveways

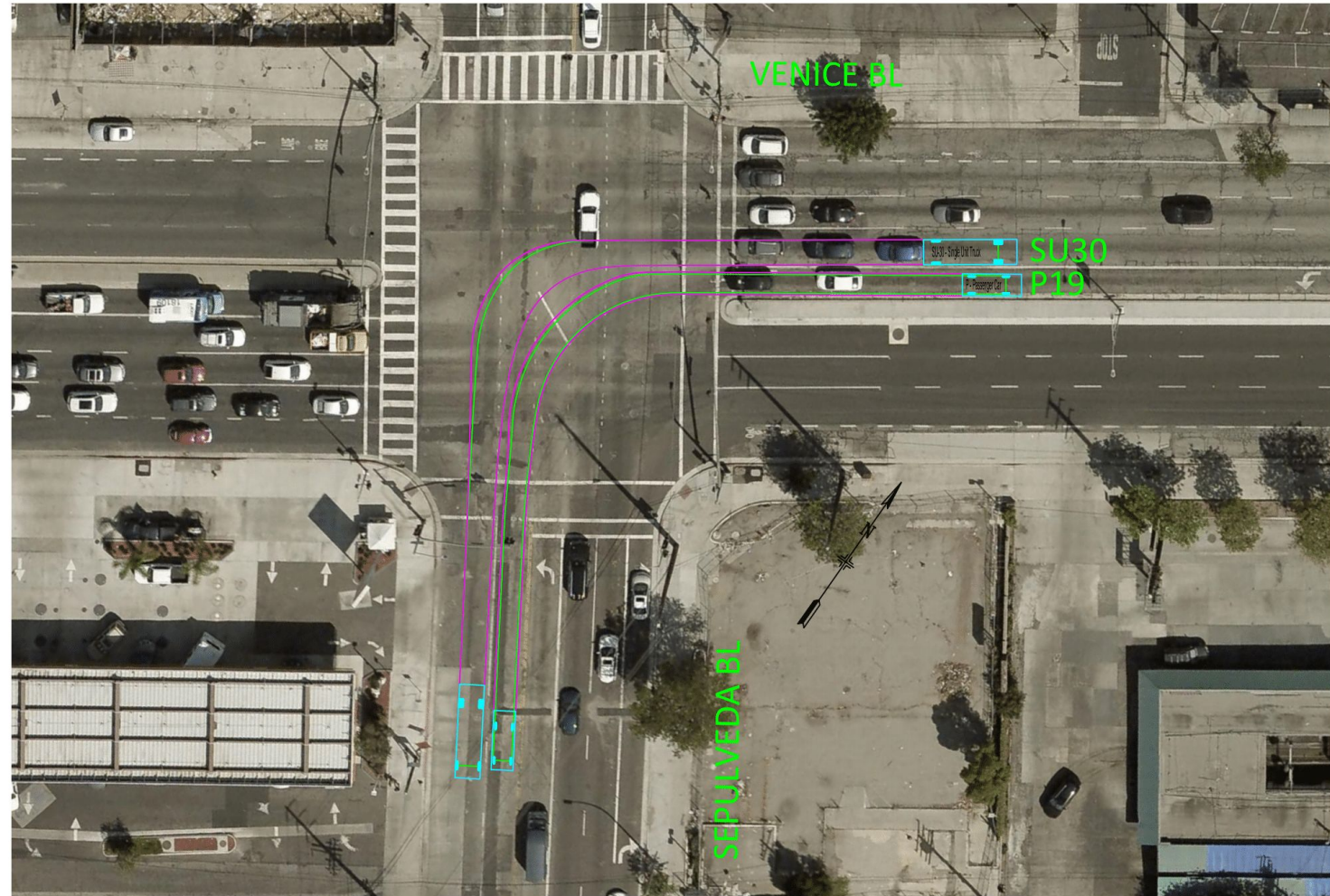


Venice Blvd.

Safety and Mobility Project

Double Left Turns

- Potential to introduce double left turns at the busiest intersections, Sawtelle and Sepulveda
- Double left turn pockets were added on Venice at Centinela after the Great Streets segment was installed



Resurfacing & Implementation Schedule ***

- LADOT will begin striping on good PCI (from Inglewood and moving eastwards) starting week of 12/5/22 .
- Repaving process (beginning with profiling) starting weekdays week of 12/12/2022
- Paving on Saturdays or weekday when a holiday falls on a Saturday
- No paving work during Holiday weekends (Thanksgiving / Christmas / New Year's, MLK)
- Paving to be completed by 1/26/2023
- Striping to be completed ~ 3 weeks after resurfacing is complete (est. March 2023)
-
- *** Schedule subject to change due to inclement weather

Venice Blvd.

Safety and Mobility Project

Next Steps

- Prior to implementation, the City and Metro will commit dedicated funding and staff resources to pre- and post-project evaluation of cut-through traffic for all portions of Venice Blvd that are implemented.
- LADOT and Metro will continue project evaluation after implementation to monitor impacts and changes to traffic patterns in the area, and collaborate with MVCC, Palms NC, and community members to propose treatments to address cut-through based on resident input.
- In partnership with MVCC, we invite participation in Phase 1 notification, education and feedback; and can kick-off planning for Phase 2 in Spring 2023
- *Inglewood Blvd- National Blvd (Phase 1):*
 - Throughout implementation, project team will continue providing construction status updates by email and social media
 - Community members are encouraged to sign up for updates and send feedback via the website
- *Lincoln- Inglewood (Phase 2):*
 - LADOT will continue engaging community members in Mar Vista, Venice and surrounding communities to refine the project proposal for the western segment of the project area, with potential to further extend the project to the beach.
- *Future Phases (Permanent Transportation Corridor Features)*
 - The City and Metro will also commit funding to develop future, more permanent enhancements such as bus boarding islands, transit amenities, bike treatments, and other high-quality transportation corridor features.